

PDA & PDAW Series

Technical Data:

Aluminum

- Extrusion – C/S uses multiple alloys & tempers which are established to be the most appropriate for the given use of individual parts. Will be one of the following: (6063-T5, T6, T52) (6061-T5, T6, T51) (6105-T5, T6) (6005-T5) (6005A-T5, T61), ASTM B221

Primary Seal

- Single Durometer - 78 Shore A
- Available in Black

Standard Loading

- 500 lbs.

Wing Seal

- Material - PVC
- Durometer - 65 Shore A
- Color - Black

Product Description:

This cover is specifically designed for exterior plaza deck applications. Frames available in 2", 3", 4" and 5" depths.

Use This Cover For:

- Suitable for exterior plaza decks
- Split slab construction
- 1" to 4" joints
- Stadium applications

Performance Characteristics:

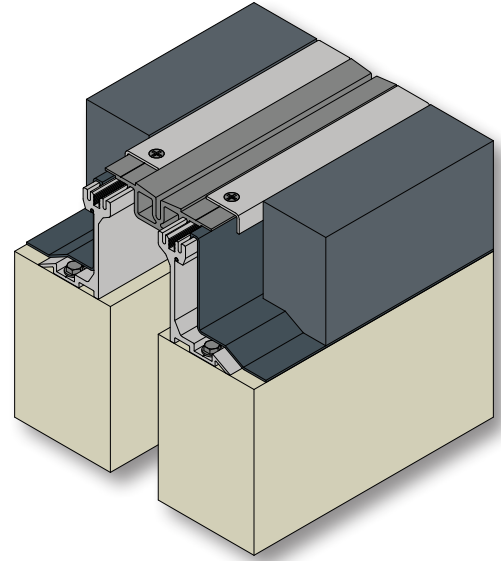
The primary seal expands and contracts to allow for movement and finishes over wing seal to create waterproof application. Wing seal is tied directly into deck waterproofing.

Standard Finishes:

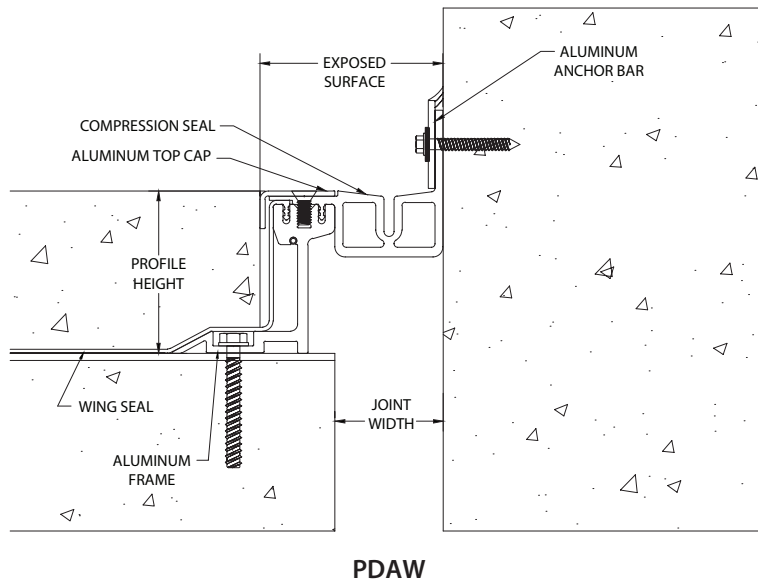
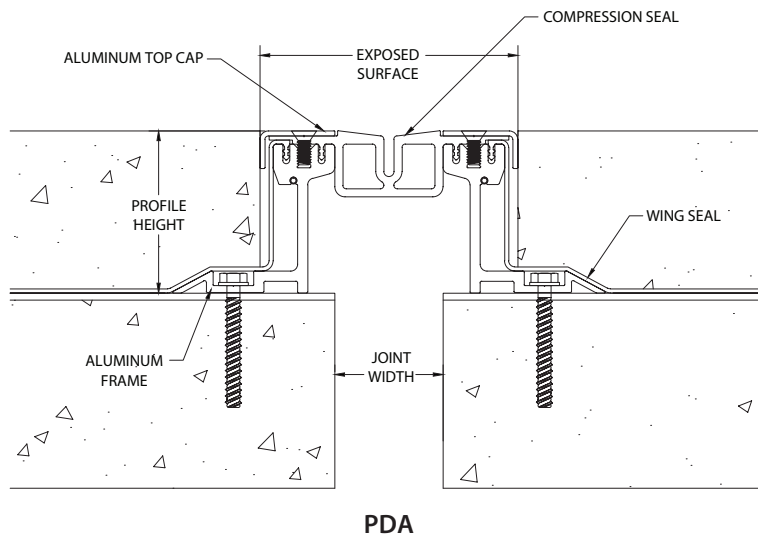
Mill finish. Clear anodize available. Gaskets are black.

Installation Guidelines:

Install frames with C/S supplied fasteners. Insert wing seal, then primary seal into frames and attach aluminum cap. Tie wing seal into deck waterproofing. For complete installation instructions, please visit www.c-sgroup.com.



MODEL	JOINT WIDTH	MINIMUM OPENING	MAXIMUM OPENING	EXPOSED SURFACE	BLOCKOUT WIDTH	BLOCKOUT HEIGHT	PROFILE HEIGHT
PDA-100	1.00" (25mm)	0.00" (0mm)	2.25" (57mm)	4.75" (121mm)	N/A	N/A	VARIABLES
PDA-200	2.00" (51mm)	0.75" (19mm)	3.25" (83mm)	4.75" (121mm)	N/A	N/A	VARIABLES
PDA-300	3.00" (76mm)	1.75" (44mm)	4.25" (108mm)	4.75" (121mm)	N/A	N/A	VARIABLES
PDA-400	4.00" (102mm)	1.50" (38mm)	6.50" (165mm)	6.75" (171mm)	N/A	N/A	VARIABLES
PDAW-100	1.00" (25mm)	0.00" (0mm)	2.25" (57mm)	3.38" (86mm)	N/A	N/A	VARIABLES
PDAW-200	2.00" (51mm)	0.75" (19mm)	3.25" (83mm)	3.38" (86mm)	N/A	N/A	VARIABLES
PDAW-300	3.00" (76mm)	0.50" (13mm)	5.50" (140mm)	3.38" (86mm)	N/A	N/A	VARIABLES
PDAW-400	4.00" (102mm)	1.50" (38mm)	6.50" (165mm)	5.38" (137mm)	N/A	N/A	VARIABLES



GFT & GFTW Series

Technical Data:

Aluminum

- Extrusion – C/S uses multiple alloys & tempers which are established to be the most appropriate for the given use of individual parts. Will be one of the following: (6063-T5, T6, T52) (6061-T5, T6, T51) (6105-T5, T6) (6005-T5) (6005A-T5, T61), ASTM B221

Primary Seal

- Dual Durometer 65 Shore A, 90 Shore A, ASTM D2240
- Available in 4 colors.

Standard Loading

- 500 lbs.

Product Description:

GFT / GFTW is a gasketed floor joint cover comprised of extruded aluminum frames and a TPR gasket. The frames are available in heights of 1", 1-1/2", 2", and 3".

Use This Cover For:

- Applications with small, interior joints where minimal visual impact is preferred.
- Suitable for most floor finishes. Frame depth and configuration is variable to suit selected finish.
- Where wheeled equipment is to be used.
- Where hygiene is important.
- 1" and 2" joints.

Performance Characteristics:

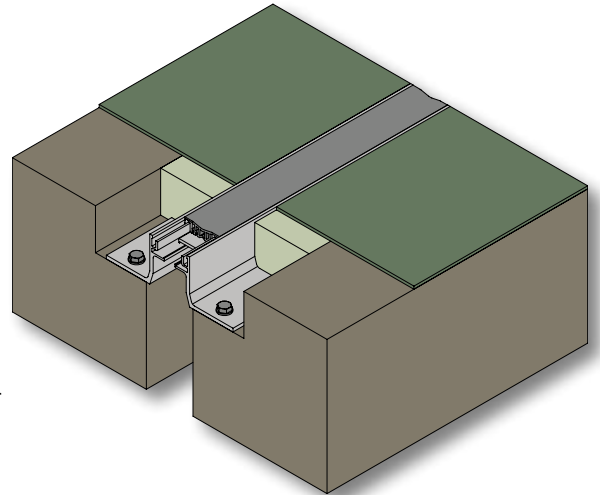
The dual durometer TPR gasket has rigid edges designed to lock into the aluminum side frames. This prevents hairline gaps from opening between the gasket and frame ensuring a hygienic seal. The softer center section of the gasket allows full movement without the need for grooves in the top surface which collect dirt. The rigid edges also prevent the gasket from being cut by heavy rolling loads that tend to destroy conventional gaskets. 2" model includes aluminum support plate for added durability.

Standard Finishes:

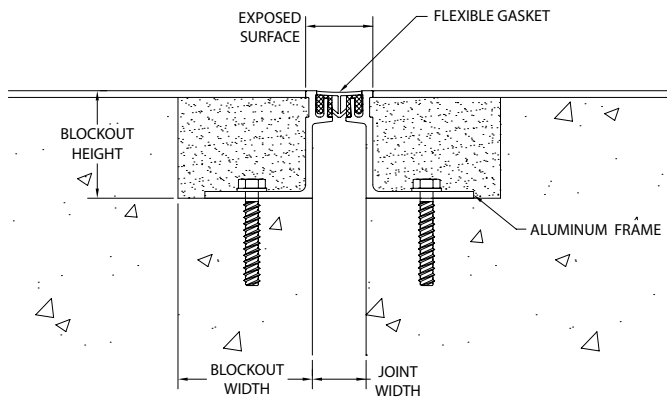
Mill finish. Gasket is available in Black, White, Gray, & Greige. Aluminum in contact with concrete/masonry will have a 2 mil heavy metal free high solids primer.

Installation Guidelines:

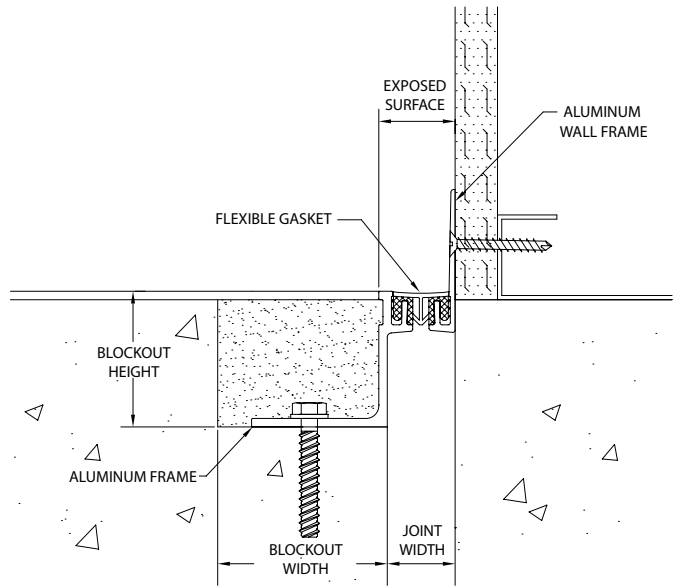
The blockouts must be prepared to receive the joint cover. Depth may be adjusted as needed to accommodate a floor finish material when required. The assembly will be attached to the slab with mechanical fasteners. The remaining space in the blockouts gets filled with a high strength, non-shrink (HSNS) grout. For complete installation instructions, please visit www.c-sgroup.com.



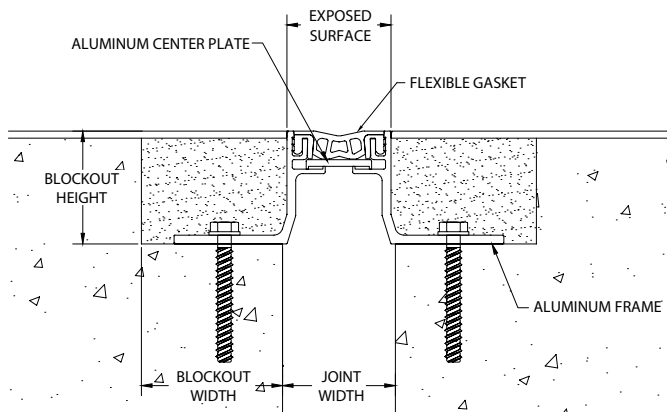
MODEL	JOINT WIDTH	MINIMUM OPENING	MAXIMUM OPENING	EXPOSED SURFACE	BLOCKOUT WIDTH	BLOCKOUT HEIGHT
GFT-100	1.00" (25mm)	0.75" (19mm)	1.25" (32mm)	1.25" (32mm)	2.50" (64mm)	1 THRU 3
GFT-200	2.00" (51mm)	1.50" (38mm)	2.50" (64mm)	1.88" (48mm)	2.50" (64mm)	1 THRU 3
GFTW-100	1.00" (25mm)	0.75" (19mm)	1.25" (32mm)	1.13" (29mm)	2.50" (64mm)	1 THRU 3
GFTW-200	2.00" (51mm)	1.50" (38mm)	2.50" (64mm)	1.93" (49mm)	2.50" (64mm)	1 THRU 3



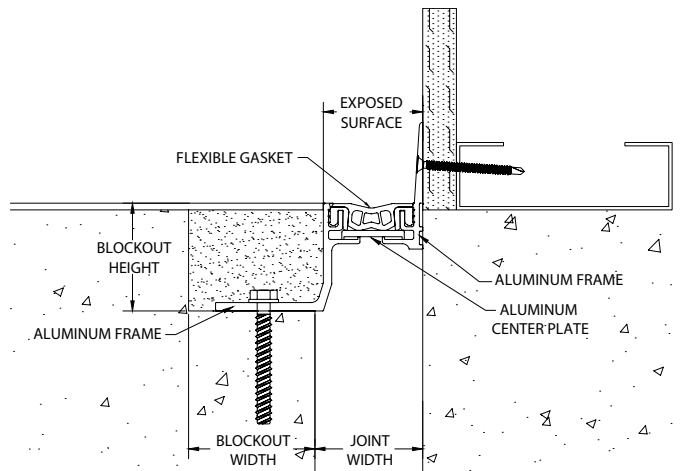
GFT-100



GFTW-100



GFT-200



GFTW-200