

INTER

Calcium Silicate Board



The Finest Choice | Superior Quality | Guaranteed Value



INTER Calcium Silicate Board has the combination of quality, aesthetic and flexibility.

Product Type

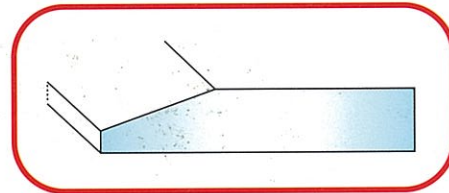
INTER Calcium Silicate Board is available in two types of edges finished:

Recessed Edge (RE)

- INTER Calcium Silicate Board is used in the flush jointing finished. Recessed edge is applied on both of the long side of the board.

Square Edge (SE)

- INTER Calcium Silicate Board may be combined with G.I frame in its application with PVC joint or expressed joint system.



Recessed Edge (RE)



Square Edge (SE)

Standard Product

Applications	Thickness (mm)			
	4.5	6	9	12
Lay on Suspended Ceiling	•	•		
Concealed Ceiling		•	•	
Internal / External Partition			•	•

Finishing

INTER Calcium Silicate Board has a natural smooth surface which requires minimum preparation prior to finishing. Dust or any loose particles sticking to the surface should be removed before applying any finishing. Ensure board is always dry before any finishing application.

Types of Finishing

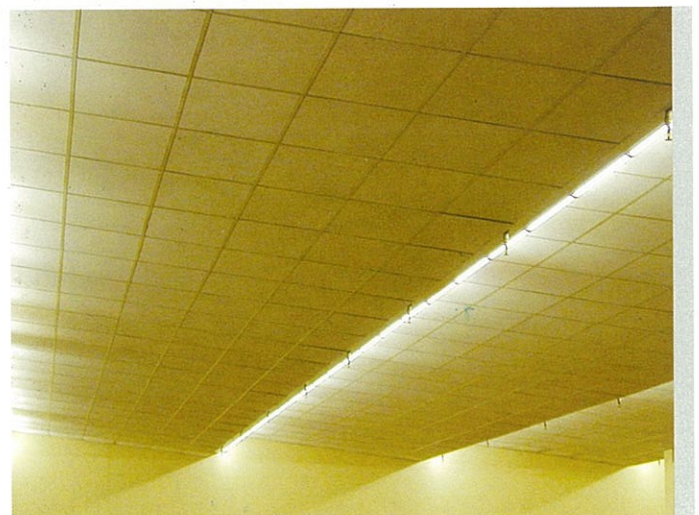
- Plastering
- Tiling
- Painting
- Lamination and Wall Papering

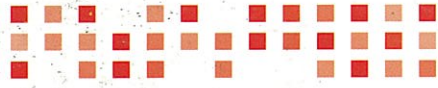
Cutting

- INTER Calcium Silicate Board can be cut easily, drilled and nailed by using normal tools. Sanding / grinding could be done on site to smooth the edges.

Framing

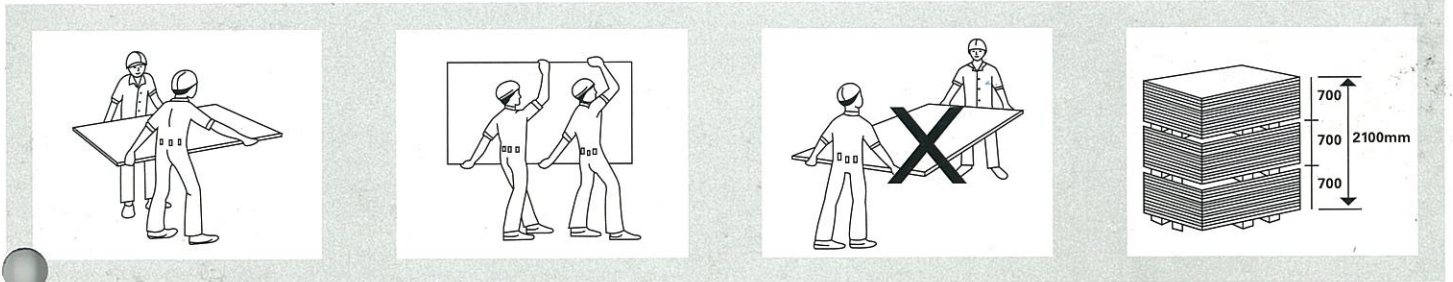
- For timber frame, use kiln-dried timber to avoid shrinkage.
- For metal frame, use galvanized metal to avoid corrosion / rust with thickness between 0.4-1.2mm. Different countries may have different specification requirement.
- Distance between frame should not be more than 610mm.
- The layout of a good frame is important in supporting good installation of the board.



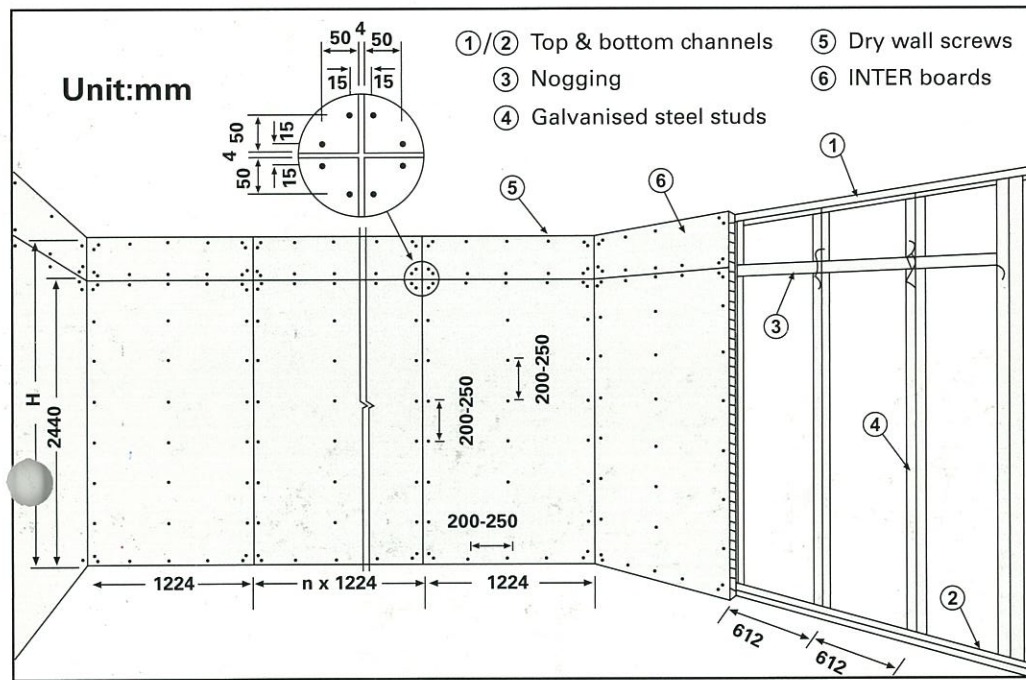


Handling and Storage

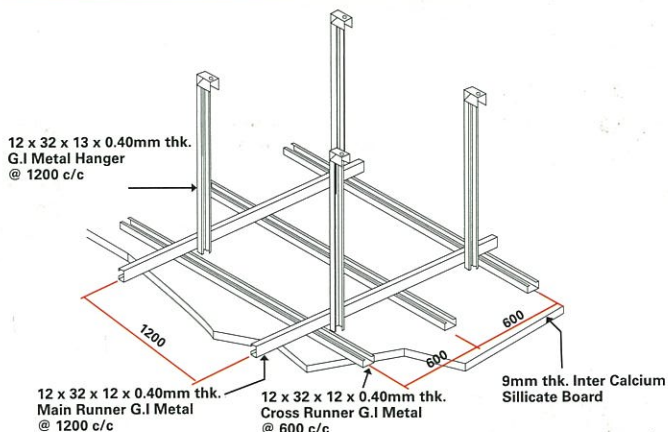
- Boards should be carried on edge along the long sides of the board either horizontally or vertically.
- Boards should be stored and stacked on wooden pallet or laid flat on a smooth level surface. Maximum height of each stack should not more than 700mm.
- Edges and corners should be protected from damaged.
- Boards should be stored on dry area and level ground area.



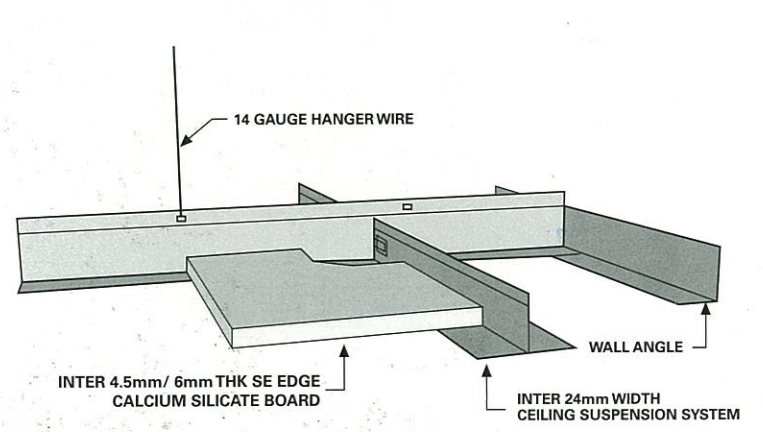
Partition System



Concealed Ceiling System



Suspended Ceiling System





Board Specification

Density: 1150kg/m³

Anti-bend Strength: >10mpa

Water-absorbing Distortion: 0.1% below

Thermal Contractive index: 2% below

Thermal Conductive index: 0.2W/mk below

Fire Performance:

- SIRIM tested: BS 476: Part 6: 1989 & BS476: Part 7: 1997
BS 476: Part 4: 1970 (1984)
- BOMBA - Class "0"

Moisture content: < 10%

Soundproof rate: 49db

Standard Board Dimension (Plain)

Thickness (±0.2mm)	size	Edge	Weight kg/m ²
6mm	1220 x 2440	Recessed Edge(RE)	7.74
9mm			11.80
12mm			15.50

Suspended Ceiling (Painted White / Plain)

Thickness (±0.2mm)	Size		Edge	Weight kg/m ²	Packing
	Metric	Imperial			
4.5mm	595 x 595	603 x 603	Square Edge (SE)	5.6	14pcs/ctn
6mm		603 x 1213		7.7	10pcs/ctn
9mm	595 x 1195			11.5	8pcs/ctn



Speciality

Inter Calcium Silicate Board has the unique combination of properties that provides various solutions to building industry.



- Non-combustible
- Sound Insulation
- High Dimensional Stability
- Smooth Surface
- Workability and Durable

Dealer / Agent:



Another Quality Product by:
TSI Trading & Distribution Sdn Bhd (502500-W)
 10-6-1, 6th Floor, Queen's Avenue Block 10,
 Jalan Shelly 55100 Kuala Lumpur, Malaysia.
 Tel: + 603 - 9206 6333 Fax: + 603 - 9206 6222
 Email: gen@tsigm.com Web: www.tsigm.com

