

July 2016

# K-FLEX



## K-FLEX ST



K-FLEX ST is closed cell, flexible elastomeric foam use in thermal and acoustic applications. K-FLEX ST is a Factory Mutual Approved, Class "0" fire rating (based on BS476 Part 6 & 7), Anti-Microbial, Clean room approved insulation without CFCs, HCFs, HCFCs, Formaldehyde, Green Guard Approved, Singapore Green Mark Approved (GBI) and Fiber free. K-FLEX ST insulation is also available with pressure sensitive adhesive and aluminium foil for faster installation process.)



EMSL ANALYTICAL, INC.



APPROVED



SINGAPORE  
**GREEN**  
BUILDING  
COUNCIL



# K-FLEX

[www.kflex.com](http://www.kflex.com)

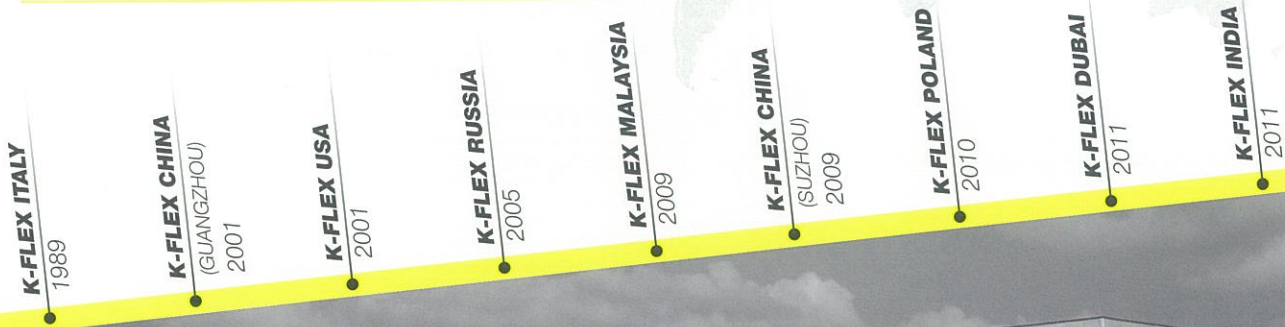
## K-FLEX ▶ ST

K-FLEX is an Italian manufacturing company specialised in the production of thermal and acoustic flexible elastomeric insulation materials.

K-FLEX is an example of a successful Italian company that has established itself worldwide. The company is present in 60 countries, with production facilities in all continents and more than 2,000 employees. In addition, the company has commercial distribution branches, located all over the world, for the efficient and effective global distribution process of its products.

The original manufacturing plant, located in Roncello (Italy), was founded in 1989 and today it is the largest in the world for the production of elastomeric insulation.

### PLANT TIMELINE ▶



## K-FLEX ▶ ST

K-FLEX ST is a multi purpose flexible elastomeric thermal insulation with a built-in vapour barrier and a closed cell structure, this make K-FLEX insulation a high resistance to water vapour transmission which in turn enable the material to maintain a high level of energy conservation efficiency.

K-FLEX ST is a dust and fibre free insulation that make it an ideal product for apartments, commercial buildings, industrial plants, oil & gas industry, marine and offshore applications.

K-FLEX ST is the ideal choice for:

- Refrigeration pipework
- Hot water piping system
- Ducting system
- Large pipe and tanks
- Chilled water piping system
- Drainage system

With 12 plants worldwide, K-FLEX can uniquely provide On-Time Delivery, Consistent Product Quality and a Highly Competitive Price.

### K-FLEX ST ▶ ADVANTAGES



#### Low flame spread

When fire tested K-FLEX ST, it does not generate flaming droplets, and has a low fire propagation index. These combined meet the fire performance requirement of class "0" as defined in Building Regulations. Further guarantee is given by supervision contracts with independent European laboratories.



#### High water vapour diffusion resistance

K-FLEX ST closed cell elastomeric insulation has a high water vapour diffusion resistance factor  $\mu$ , that minimizes water vapour penetration, giving excellent long term performance.



#### Very low thermal conductivity

K-FLEX ST thermal conductivity is  $\lambda_{0^\circ\text{C}} = 0.032\text{W}/(\text{m}\cdot\text{K})$ . The thermal conductivity coefficient is the most important factor in calculation focused on energy saving.

**TECHNICAL DATA** ▶ K-FLEX ST

<b>Brief description</b>	Flexible elastomeric foam, closed-cell insulation material
<b>Material type</b>	Nitrile Butadine Rubber
<b>Colour</b>	Black
<b>Assembly</b>	Light weight and flexible. Closed cell structure means no additional vapour barrier is required.

Property	Value/Assessment	Special Remark
<b>Temperature Range</b>	Max. service temperature: + 116 °C Min. service temperature: -200 °C	Tested acc.to EN 14706, EN 14707 and EN 14304
<b>Thermal Conductivity</b>	$\lambda \leq 0.034$ W/(m.K) at +20 °C $\lambda \leq 0.032$ W/(m.K) at 0 °C $\lambda \leq 0.028$ W/(m.K) at -50 °C	Tested according to DIN EN 12667, EN ISO 8497
<b>Water vapour diffusion resistance</b>	Water vapour diffusion resistance: $\mu \geq 10,000$ Water Absorption: 0.2% by volume	Tested acc. To EN 12086, EN 13469 Test acc to ASTM C 209
<b>Fire performance</b>	Surface Spread of Flames: Class 1 Fire Propagation: Total Index Performance (I) $\leq 12$ Sub Index (i1) $\leq 6$ Fire Performance: Class 0	Surface Spread of Flame: tested according to BS 476 Part 7:1997 Self-extinguishing, does not drip, does not spread flames Fire Propagation: tested according to BS 476 Part 6:1989
<b>Other Fire Class</b>	FM-approved V0, 5VA Flame spread index (FSI): 25 Smoke develop index (SDI): 30 Ignitability index: 0 Spread of flame index: 0 Heat evolved index: 0 Smoke develop index: 3	Tested acc.to Class No.4924 UL 94 Tested acc. To ASTM E84  Tested acc. To AS/NZS 1530.3 - 1999
<b>Chemical behaviour</b>	Excellent resistance to ozone, oil and chemicals (consult product test list).	
<b>UV resistance</b>	For UV protection K-FLEX finish paint required	
<b>Acoustic Insertion Loss</b>	35 dB	
<b>Other certificates</b>	Anti microbial Clean room - contamination class "A" Greenguard Singapore Green Building Products Low VOC	Tested acc. To ASTM G21 Tested acc. To ASTM F51-00 Tested acc. To ISO 17025 Approved Tested acc. To ISO 16000 part -3, -6, -9, -11

For temperatures below -50 °C please contact our Customer Service Center to request for the corresponding technical information.  
The reaction to fire classification is valid on metal or solid, mineral surfaces.  
Further documents such as test certificates, approvals and the like can be requested using the registration number given.  
**K-FLEX** reserves the right to change data and technical requirements without notice.

K-FLEX ST

**K-FLEX ST** ▶ Pipe Insulation Thickness Recommendations

Conditions	Pipe Size			
	6mm – 28mm	28mm – 60mm	60mm – 114mm	114mm – 168mm
Ambient Temperature: 33°C Medium Temperature: 6°C Relative Humidity 60%	10 mm	13 mm	13 mm	13 mm
70%	19 mm	19 mm	19 mm	25 mm
80%	25 mm	32 mm	32 mm	32 mm
Ambient Temperature: 33°C Medium Temperature: 12°C Relative Humidity 60%	10 mm	10 mm	10 mm	13 mm
70%	13 mm	13 mm	19 mm	19 mm
80%	19 mm	25 mm	25 mm	25 mm
Ambient Temperature: 33°C Medium Temperature: -50°C Relative Humidity 60%	32 mm	40 mm	40 mm	50 mm
70%	50 mm	50 mm	60 mm	60 mm
80%	63 mm	75 mm	90 mm	100 mm

**K-FLEX ST** ▶ Sheet Insulation Thickness Recommendations

Conditions	Ducts – Tanks – Vessels – Equipment Metal
Ambient Temperature: 33°C Medium Temperature: 6°C Relative Humidity 60%	13 mm
70%	25 mm
80%	40 mm
Ambient Temperature: 33°C Medium Temperature: 12°C Relative Humidity 60%	13 mm
70%	19 mm
80%	32 mm
Ambient Temperature: 33°C Medium Temperature: -50°C Relative Humidity 60%	50 mm
70%	75 mm
80%	125 mm

# K-FLEX ▶ ST



K-FLEX ST tube is available in 2 meters length. In sheet form, K-FLEX ST is available in roll or pre-cut sheet. All sheet material is available with or without self adhesive and/or self adhesive and aluminium foil.

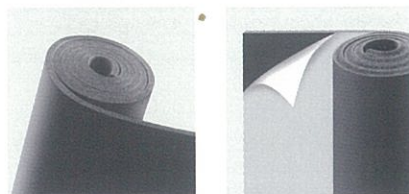
## RANGE ▶ K-FLEX ST TUBES (2 METRES)

Copper Pipe		Iron Pipe		6 • 1/4"		9 • 3/8"		13 • 1/2"		19 • 3/4"		25 • 1"		32 • 1 • 1/4"		40 • 1 • 1/2"		50 • 2"	
OC Inches	ø OD mm	LPS Inches	ø OD mm	size	m/box	size	m/box	size	m/box	size	m/box	size	m/box	size	m/box	size	m/box	size	m/box
1/4"	6					9x6	288	13x6	160	19x6	100								
3/8"	10	1/6"	10.2			9x10	240	13x10	152	19x10	80	25x10	60						
1/2"	12					9x13	180	13x13	128	19x13	72	25x13	50						
5/8"	15	1/4"	13.5	6x16	266	9x16	168	13x16	112	19x16	60	25x16	50						
3/4"	20			6x19	180	9x19	136	13x19	104	19x19	60	25x19	40	32x19	32				
7/8"	22	1/2"	21.3	6x22	180	9x22	128	13x22	98	19x22	60	25x22	38	32x22	24	40x22	18	50x22	12
1"	25			6x25	152	9x25	108	13x25	80	19x25	50	25x25	40	32x25	24	40x25	16	50x25	10
1.1/8"	28	3/4"	26.9	6x28	130	9x28	98	13x28	78	19x28	48	25x28	32	32x28	24	40x28	16	50x28	10
1.3/8"	35	1"	33.7	6x35	100	9x35	76	13x35	58	19x35	36	25x35	24	32x35	18	40x35	16	50x35	8
1.5/8"	42	1.1/4"	42.4	6x42	90	9x42	60	13x42	48	19x42	32	25x42	22	32x42	16	40x42	12	50x42	8
1.7/8"	48	1.1/2"	48.3			9x48	50	13x48	40	19x48	24	25x48	18	32x48	14	40x48	10	50x48	8
2.1/8"	54					9x54	46	13x54	34	19x54	24	25x54	18	32x54	14	40x54	10	50x54	8
2.3/8"	60	2"	60.3			9x60	46	13x60	32	19x60	22	25x60	18	32x60	10	40x60	8	50x60	8
3"	76	2.1/2"	76.1			9x76	40	13x76	26	19x76	18	25x76	10	32x76	8	40x76	8	50x76	6
3.1/2"	89	3"	88.9			9x89	36	13x89	24	19x89	14	25x89	8	32x89	8	40x89	8	50x89	6
4.1/2"	114	4"	114.3			9x114	22	13x114	18	19x114	12	25x114	6	32x114	6	40x114	6	50x114	6
		5"	139.8													40x140	4	50x140	4
		6"	165.2													40x168	4	50x168	4

## RANGE ▶ K-FLEX ST SHEET IN ROLLS

Type	Thickness		Sheet 1.14 metre wide	
	mm	inches	format	m <sup>2</sup> /box
PL/RO 06	6	1/4"	30 x 1.14	34.20
PL/RO 10	10	3/8"	20 x 1.14	22.80
PL/RO 13	13	1/2"	14 x 1.14	15.96
PL/RO 16*	16	5/8"	12 x 1.14	13.68
PL/RO 19	19	3/4"	10 x 1.14	11.40
PL/RO 25	25	1"	8 x 1.14	9.12
PL/RO 32	32	1.1/4"	6 x 1.14	6.84
PL/RO 40	40	1.1/2"	4 x 1.14	4.56
PL/RO 50	50	2"	4 x 1.14	4.56

\*16mm only available upon received Purchase Order from customer.



Self adhesive sheets available in all sizes.

## PACKAGING ▶ K-FLEX ST TUBES AND SHEETS

### K-FLEX ST Tubes



Measurements:  
2.1m x 0.394m x 0.32m

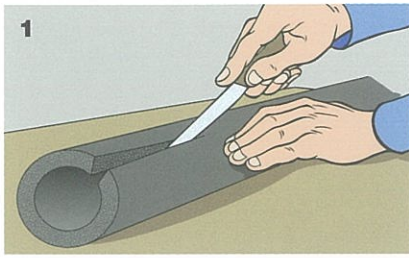
### K-FLEX ST Sheets

Polyethylene bags  
The bags allows for outdoor storage during the sorting stage.

Measurements:  
0.5m x 1.23m



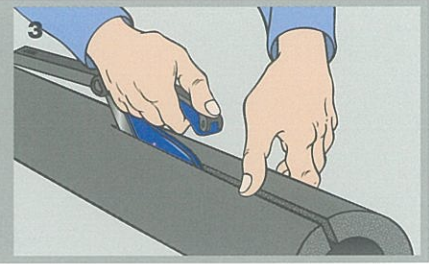
**INSTALLATION ▶ FITTED PIPES**



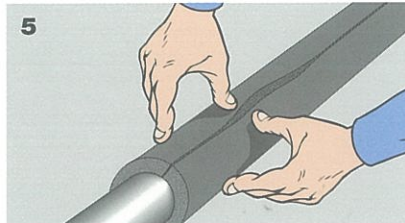
Use only the sharpest knife for cutting - this makes the subsequent glueing far easier.  
We recommend using the K-FLEX cutter which is ideal for longitudinal cuts.



The use of the cutter is illustrated in these two diagrams. Let the blade run along the tube without the tool's surfaces touching it to get a neat, clean cut.

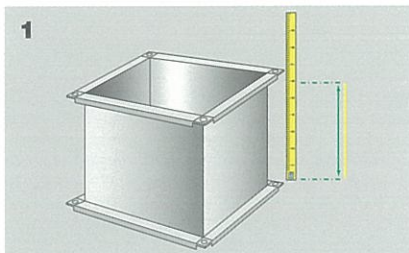


Position the tube so that the edges are separated, and apply an even layer of K-FLEX K-996 glue.



Once the glue has dried, reseal the tube, pressing the edges firmly together.

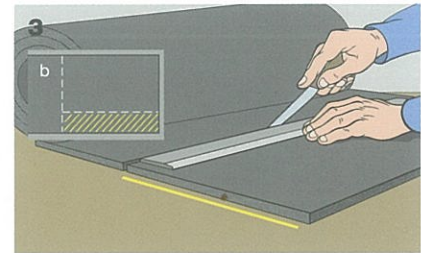
**INSTALLATION ▶ INSULATION DUCTINGS**



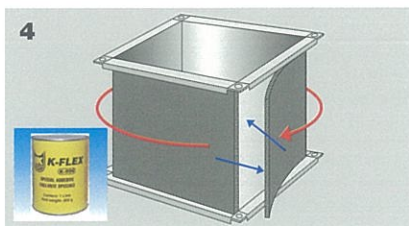
There are considerable advantages in using K-FLEX ST ROLL SHEET for ducting, which has the same height as the sheeting.  
Take the measurements of the ducting section to be lagged.



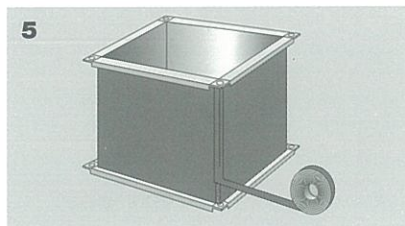
Use K-FLEX thinner to thoroughly clean the surface to be insulated. Insulation is not recommended where there is incrustation or other flaws which could prevent the sheeting from sticking perfectly.



Cut the corresponding portion out of the roll. There is an obvious saving in material by cutting the sheeting along its height (a) rather than along the length of the 1000 mm sheeting (b).



Glue the side of the sheeting to be stuck to the conduit and glue the conduit surface, then apply the sheeting, keeping it taut at the corners.



Cover the corner where the edges join with adhesive insulating tape. Compared to a similar operation carried out with 1000 mm sheeting, as well as the saving in material, there has only been one cut in the application.



## PROJECT ▶ MALAYSIA

D&Y Textile(M), Johor  
 Kaifa Technology, Johor  
 First Solar  
 Robert Bosch  
 Scandisk  
 Infineon Kulim  
 Haemonetics  
 B.Braun  
 Finisar Corporation  
 Sunpower Alor Gajah  
 Biocon  
 Hersey Chocolate  
 Seagate JB  
 Platinum Face, Jln Sultan Ismail  
 The Leafz, Off Jln Sg. Besi  
 JAKIM A,B,C,D, Putrajaya  
 2C10 Putrajaya  
 4G5 Putrajaya  
 DBKL Tower, KL Eco City  
 Sky88  
 The Puteri Cove Residence, Puteri Harbour  
 Green Haven, JB  
 D' Summit, JB  
 Paradigm Johor  
 Four Season, KL  
 Uptown Residences, D'sara Uptown  
 Cherish Springs Condo & Hotel, Jaya 33  
 Damansara Foresta, Sri D'sara  
 Glomac Damansara  
 Le Nouvel, KLCC  
 Regina, USJ 1  
 The Centina, Jln Sg Besi  
 Beremi Hotel, Jln Bellamy, KL  
 Dijaya, Tropez Danga Bay, JB  
 UiTM Puncak Alam  
 One Amerin, Balakong  
 Pangaea, Cyberjaya  
 Tabung Haji Sepang  
 One South, Serdang Perdana  
 Pusara, Putrajaya  
 M-City, Jln Ampang  
 Top Glove HQ @Setia Alam  
 Country Garden, JB  
 Forest City, JB  
 Schlumberger, Labuan  
 Parcel F, Putrajaya  
 IIUM, Medical Campus, Kuantan  
 KL Metropolis, Matrade  
 Vogue Suites, KL Eco City  
 CPI Avantas, Old Klang Road  
 Sieramas Height Condo,  
 Three28 Residence, Jln Tun Razak  
 Public Mutual HQ  
 JKG Tower  
 D'Centrum, Uniten  
 MAHSA University, Putra Permai  
 VINA SOHO, Cheras  
 IKEA Cheras  
 Cristal Residence, Cyberjaya  
 Verde, Ara Damansara  
 Continental City, Glenmarie  
 First Lady Apparels  
 Lembaga Koko Malaysia  
 ACORIS, MK 20  
 Glomac Centro  
 Reflection Damansara  
 IPKB, Setia Alam  
 Teega Residence, Puteri Harbour  
 Vortex, Jln Sultan Ismail  
 The Park Residences, Bangsar South  
 3Towers, Jln Ampang  
 Arcadia, Desa Parkcity  
 Bangi Hospital  
 Berjaya Central Park Tower 1 & 2  
 GM Klang  
 Vertical Tower, Bangsar South  
 Tropicana International School  
 The Robertson  
 Parliament House  
 Residence 22, Mon't Kiara



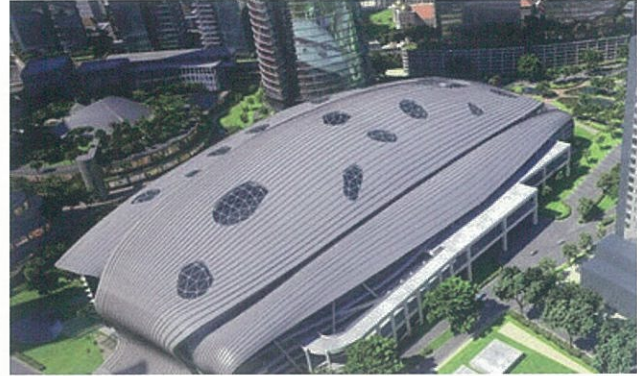
## PROJECT ▶ THAILAND

MahaNakhon Tower  
 Marriott Surawong  
 Palladium Hotel  
 Maya Chiangmai  
 Central Embassy Chiangmai  
 Promenada Changmai  
 four Wing Grand Hotel  
 Dusit Hotel  
 Four Point Hotel  
 Best Western Hotel  
 Holiday Inn Hotel  
 Vana Belle Hotel  
 Paradise Park  
 The Nine Community Mall  
 The Walk  
 Fashion Island  
 Mega Play  
 Merry King Rungsit  
 Western Digital  
 Canon Korat  
 Toshiba Factory  
 Seagate Korat  
 Ichitan Factory  
 Doubla A Factory  
 Nikon Factory  
 Ajinomoto Factory  
 Nidec Copel  
 Asahi Factory  
 Ducati Factory  
 New Tobacco Factory  
 Sukhothai King Palace  
 Royal Gems  
 Thammasat University  
 IDEO Mobi  
 Mega Home  
 Noble Ploenjit  
 Noble Revolve Ratchada  
 Harbor Mall Laemcogabang  
 Index Living Mall  
 The Garden Night Latgrabang  
 Alucon Factory  
 Chapter One The Campus  
 Fabinet Factory  
 Egat krontoy  
 Choroorn Dukit ramintar  
 Royal Paragon Phuket  
 G-Land Tower  
 Bang - Bangkok CDC  
 Ares pattaya  
 Pockperti Khaoyai  
 FYI HOTEL  
 FYI CENTER (OFFICE)  
 Park 24 Condominum  
 Rosewood Hotel @Kampuchea  
 Rattanathibet Park  
 Siamese@ Sukhumvit 31  
 Siamese Blossom@ Ramintra  
 Than Living Condo @Bangbuathong  
 Than Living Condo @Sathorn-charoenraj  
 Wish Signature Condo @Siam  
 Bluport  
 Celeste Condo (Khao Tao Bay View Resort)  
 Terminal 21 @ Korat  
 Pearl Bangkok 25 Fl (Pruksa Head Office)  
 Maya Theatre @Pattaya  
 Issara Collection @Sathorn  
 Arcadia Beach @Chonburi  
 Nitta project  
 Extension Factory @ Amata, Rayong  
 T Project  
 Hemaraj Industrial Estate @ Rayong  
 Mal Ton Residence 31 @Sukhumvit 63



## PROJECT ▶ INDONESIA

Akmani Hotel, Legian - Bali  
 All Season Hotel - Nusa Dua, Bali  
 Pullman Hotel, Central Park - Jakarta  
 Cavington Hotel - Jogya  
 Novotel Hotel - Tangerang  
 Sol Marina Hotel - Serpong  
 Mercure Hotel - Surabaya  
 Pakubuwono The View Apartement - Jakarta  
 Coca-Cola Factory - Surabaya  
 Australia Embassy Office - Jakarta  
 Istana Presiden Bogor  
 The East Office - Jakarta  
 Wisma Soho Office - Jakarta  
 The Peak Apartement - Jakarta  
 XXI Cinema All Outlet - Indonesia  
 Darya Varia Laboratories Factory - Cileungsi  
 Indo-Bharat Rayon Factory - Purwakarta  
 Indolakto Factory - Sukabumi  
 Sanbe Farma Factory - Bandung  
 Uniplast Factory - Cikarang  
 Central Park Office Tower - Jakarta  
 Mali Paris Van Java - Bandung  
 Schering Pharmaceutical - Pandaan, Surabaya  
 Bank Indonesia (Bi) - Lampung  
 Mall & Office Tower Kota Kasablanka - Jakarta  
 Plaza Indonesia Extention - Jakarta  
 Theme Park Trans Studio - Bandung  
 Konimex Pharmaceutical - Solo  
 Kraft Foods Factory - Cikarang  
 Pt Krakatau Steel - Cilegon  
 Apartemen Kencana Pondok Indah - Jakarta  
 Aiport Bajo - Nusa Tenggara Timur  
 Ferron Par Pharmaceutical Factory - Cikarang  
 Jotun Factory - Cibitung  
 Nutrifood Factory - Cikarang  
 Reckitt Beckinser (Detol) Factory - Bekasi  
 Unilever Factory - Cikarang  
 Rs Pertamina - Sentul  
 Data Center Cbn Cyber Office - Jakarta  
 Kantor Kementerian Pemberdayaan Perempuan & Anak - Jakarta  
 Schlumberger Workshop And Office - Bekasi  
 Apartemen Ambasad - St Moritz - Jakarta  
 Apartement Presidential Puri Kembangan - Jakarta  
 Capitol Apartement - Jakarta  
 Sumarecon Mall - Bekasi  
 Bayer Healthcare Indonesia Factory - Cibinong  
 B-Braun Medical Factory - Cikampek  
 Fahrenheith Factory - Tangerang  
 Frisian Flag Factory - Jakarta  
 Hankook Tire Factory - Cikarang  
 Fave Hotel - Papua Nugini  
 Alfa Head Quarter Alam Sutra - Tangerang  
 Infomedia Office - Bandung  
 Maxx Box Mall - Tangerang  
 Glaxo Parmaceutical Factory - Pulo Gadung  
 Hotel Swiss - Bel Legian Bali  
 Menara Danamon Kuningan - Jakarta  
 Hotel Radison - Bali  
 Tempo Scan Pacific - Cikarang  
 Sinda Budi Sentosa Tambun Bekasi  
 Toyota Training Center  
 Lotte Factory - Cibitung  
 Nittsu Shoji - Kerawang  
 Sano Gratia Pharmaceutical - Cikarang  
 Mahakam Beta Farma (Mbf) Factory, Pulogadung - Jakarta  
 Kawan Lama Sejahtera Office - Jakarta  
 Mid Town Signature - Summarecon Serpong  
 Tangerang  
 Tanto Line Office - Tj Perioik Jakarta



**PROJECT** ▶ SINGAPORE

Changi Water Reclamation Plant  
 NUS Laboratory  
 AMD Singapore  
 Biopolis Centre  
 Glaxo Wellcome Pharmaceutical (GSK)  
 Novartis Plant @ Tuas  
 Crystal Plant @ Jurong Island  
 Singapore General Hospital  
 P&G @ Biopolis  
 Sony A&A  
 Abbott Pharmaceuticals  
 Wyeth Pharmaceuticals  
 Schering Plough Corporation  
 UMCi @ Pasir Ris  
 3M @ Gambas Ave  
 Philips SSMC Wafer Fab  
 Seagate @ Woodlands  
 Siemens Semiconductors Plant  
 Hewlett Packard  
 Changi Store Hub  
 Bugis Junction  
 Comcentre 3  
 HDB Hub @Toa Payoh  
 Marina Bay Sand  
 New Cathay Building  
 Nanyang Polytechnic  
 Teck Ghee Community Club  
 Global Switch @ Tai Seng  
 IMM extension  
 Kranji Turf Club  
 DHL Head Office  
 UE Square  
 Singapore American School  
 Bukit Timah Cold Storage  
 City Square Mall  
 Hitachi Tower  
 Ministry of Manpower  
 Japanese School @ Changi Campus  
 Junction Nine @ Yishun  
 High Park Residence @ Seng Kang  
 Cabana @ Yio Chu Kang  
 Double Bay @ Simei  
 Tampines Central 8 (DBSS)  
 Twin Fountains @ Woodland  
 Sentosa Cove Apartment  
 Lincoln Suites Condo  
 Cote D'Azur Condo  
 Caspian Condo @lakeside  
 Cusaden Condo  
 Skyline @Telok Blangah  
 High Oak Condo  
 Latitude Condo @ Jalan Mutiara  
 Rain Forest Condo  
 Austville Condo @ Seng Kang  
 Light Condo @ Cairhill

**PROJECT** ▶ PHILIPPINES

Texas Instrument  
 Sunpower Fab 2 & Fab 4 Factory  
 United Pulp and Paper Manufacturing Plant  
 Marina Bay Resort  
 BPO Araneta Call Center  
 Cebu Airport Terminal  
 Palawan Airport Terminal  
 Metro North Call Center  
 Conrad Hotel  
 Festival Shopping Mall  
 MBR Hotel & Casino  
 National Museum of Natural History  
 Cebu Hotel  
 SMDC-New Port

**PROJECT** ▶ CAMBODIA

Cho Ray Phnom Penh Hospital  
 Almond Hotel  
 Olypia City  
 Calmette Hospital  
 City Tower  
 The Bridge Showroom  
 Toyoko Inn Hotel  
 Thai Villiage Restaurant  
 Cazameridian Twin Tower  
 Era Phnom Penh Hotel  
 Era Siem Reap Hotel  
 Tela Gase Station Head Office  
 Mazda Showroom  
 Marriott Hotel  
 The Parkland  
 DFS  
 CMED

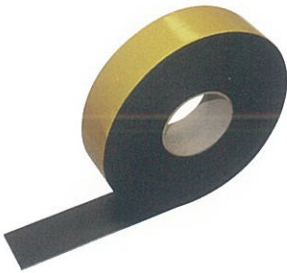
**PROJECT** ▶ VIETNAM

Robert Borsch Factory  
 Dona Food Wear Standard Vietnam Factory  
 PNJ Factory  
 Pepsi Cola Factory  
 First Solar Factory  
 LPG Thi Vai Factory  
 TCIE Da Nang Factory  
 DKSH Factory  
 CICT Cai Lan Port  
 Lao Coffee Factory  
 City Garden Apartment  
 Hyatt Regency Apartment  
 Crown Plaza Hotel  
 Times Square  
 Hue Hospital  
 Russia Embassy  
 Big C Supermarket  
 ICON 4 Complex  
 British Vietnam International School  
 An Giang Television  
 Minh Viet Building  
 Cotec Office Building  
 Sai Gon Pavillon  
 Intercontinental Resort & Spa @ Da Nang  
 Bitexco Financial Centre

# K-FLEX ST

## ACCESSORIES ▶ K-FLEX ST

SELF ADHESIVE FOAM TAPES



PIPE SUPPORT



K 996 GLUE



ALUMINIUM TAPE



# K-FLEX

**K-FLEX MALAYSIA SDN BHD**

Lot 2752 Jalan Raja Nong, Taman Klang Jaya, 41200 Klang,  
Selangor Darul Ehsan, Malaysia  
tel: +603-5162 7899 / fax: +603-5162 3799  
e-mail: sales@k-flex.com.my